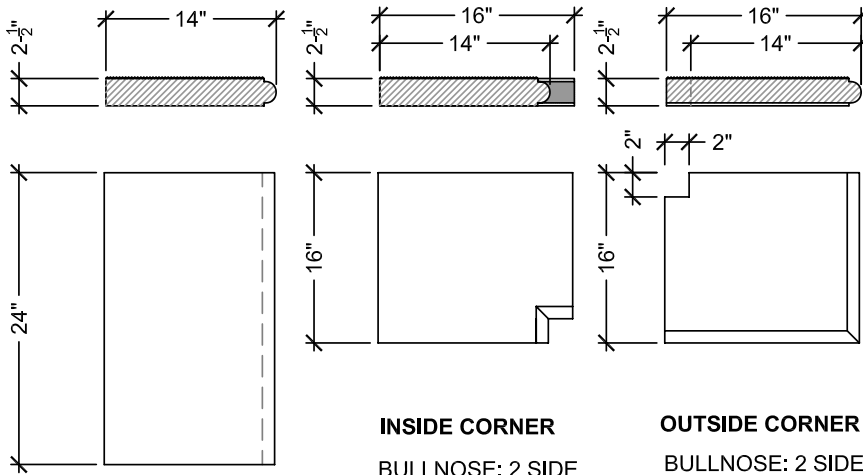
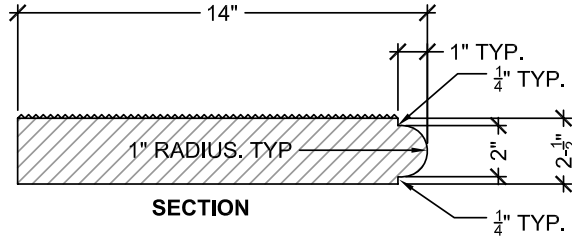




CLASSIC ENTRY STEP DETAILS



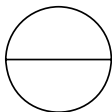
STRAIGHT
BULLNOSE: 1 SIDE
THICKNESS: 2- $\frac{1}{2}$ "
SIZE: 14" x 24"

INSIDE CORNER
BULLNOSE: 2 SIDE
THICKNESS: 2- $\frac{1}{2}$ "
SIZE: 16" x 16"
JOINS W/ STRAIGHT
PIECES TO FORM
INSIDE CORNERS.

OUTSIDE CORNER
BULLNOSE: 2 SIDE
THICKNESS: 2- $\frac{1}{2}$ "
SIZE: 16" x 16"
JOINS W/ STRAIGHT
PIECES TO FORM
OUTSIDE CORNERS.

NOTES:

1. PRECAST UNITS ARE INDIVIDUALLY HAND CAST. LENGTHS ARE APPROXIMATE. SOME VARIATIONS ARE EXPECTED.
2. INSTALLATION TO BE COMPLETED IN ACCORDANCE WITH GENERALLY ACCEPTED MASONRY PRACTICE.
3. STIPPLE FINISH ON TOP WITH SMOOTH BULLNOSE. SANDBLAST FINISH AVAILABLE.
4. PRECAST UNITS MAY BE CUT TO FIT FIELD CONDITIONS.



CLASSIC ENTRY STEP DETAILS

SCALE: N.T.S.

